

Quick operation guide



*Before operating this unit, please read these instructions carefully, and save them for future use.

Packing List

(Please different according to the environment)

Open the packaging, make sure the VR camera is intact, and compare with the figure below to confirm whether the accessories are complete.



VR camera x1



Quick operation guide x1

1

The Introduction of the appearance

(Picture only for reference, Standard based on object.)



Items	Description
IR Light	The device will mend the infrared light automatically when it interacts the lower levels of light.
SD Port	Support micro SD card for local storage (Max 32GB).To confirm the SD card work well, before insert the SD card,please makesure its file system is FAT32 also more than 64MB available space.
Reset Button	Using reset pin to press the reset button 10 seconds from the reset hole.

2

Operation requirement

Step1

Open Up

Connecting the device to power cord, do wifi configuration after device finish start up.

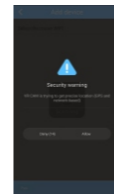
Special Note: For Android phone users, in order to facilitate the user to configure the device, App will take the initiative to obtain information on the surrounding wifi. Therefore, during the initial configuration, the phone will ask whether to allow the application to obtain the relevant permission, click Allow!

LED indicator:

LED lights flash (0.5s) --- STA

LED indicator flashes slowly (2s) --- AP

LED indicator light --- successful configuration



3

Step2

1 Download and registration of APP

Scanning the two-dimensional code on the last page of this guide, download and install the APP - VR CAM (download APP will consume some - phone date flow, suggest do it in the wifi environment). Open the APP, register an account and log in according to prompts on the interface.

2 Add and view (the camera connected to the Internet mode)

1.Fast setup for android system

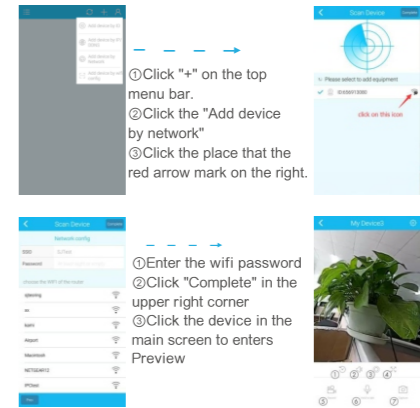
The turning on default model of the device is AP mode. the device does not support the 5G WiFi router, in process of setup, please using the 2.4G WiFi router.

The first way to add a wired device

Adding devices by LAN scanning (Recommended)

The one end of the cable connecting the router LAN port, the other end of cable connected to Ethernet port of the device, connect your phone with the wifi signal that the router send out.

4



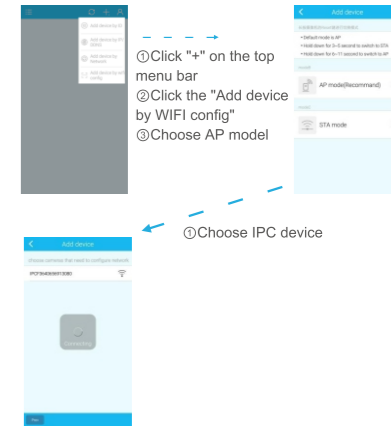
①Click "+" on the top menu bar.
②Click the "Add device by network"
③Click the place that the red arrow mark on the right.

①Enter the wifi password
②Click "Complete" in the upper right corner
③Click the device in the main screen to enters Preview

① Review ② Voice switch ③ Mural mode ④ Full screen
⑤ Video ⑥ Intercom speaking ⑦ Screenshot

5

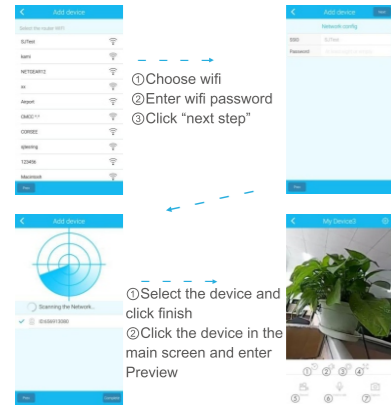
The second way to add wireless devices AP mode connection (recommended)



①Click "+" on the top menu bar
②Click the "Add device by WIFI config"
③Choose AP model

①Choose IPC device

6



- ①Choose wifi
- ②Enter wifi password
- ③Click "next step"

- ①Select the device and click finish
- ②Click the device in the main screen and enter Preview

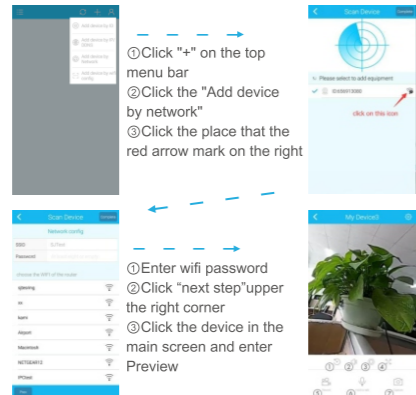
2、Iphone Quick Configuration

The device is turned on by default AP mode, the device does not support the 5G WiFi router, please use the 2.4G WiFi router while configuration process

7

One way to add a wired device (recommended)

The one end of the cable connecting the router LAN port, the other end of the cable connected to Ethernet port of the device, connect your phone with the wifi signal that the router send out.



- ①Click "+" on the top menu bar
- ②Click the "Add device by network"
- ③Click the place that the red arrow mark on the right

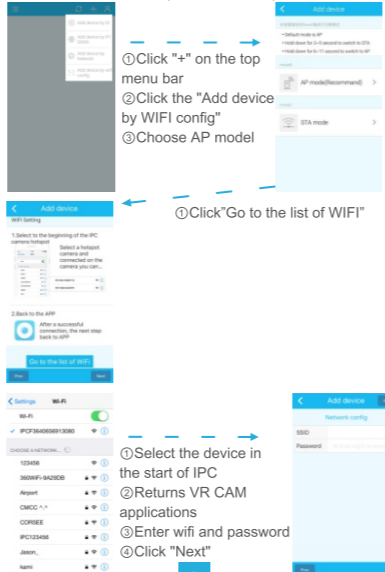
- ①Enter wifi password
- ②Click "next step" upper the right corner
- ③Click the device in the main screen and enter Preview

Adding device by network scanning, wait until the device showed on the interface, if the connection success,the device ID number would displayed on the interface, select the device ID and click "Finish".

8

The second way to add wireless devices

AP mode connection (recommended)



- ①Click "+" on the top menu bar
- ②Click the "Add device by WIFI config"
- ③Choose AP model

- ①Click"Go to the list of WIFI"

- ①Select the device in the start of IPC
- ②Returns VR CAM applications
- ③Enter wifi and password
- ④Click "Next"

9

Adding device by network scanning, wait until the device showed on the interface, if the connection success,the device ID number would displayed on the interface, select the device ID and click "Finish".

Function introduction

- A new kind HD network camera
- Support connecting by Wifi
- Support motion detective , once there is motion happening in surveillance area , alarm will be triggered.
- Support electronic PTZ
- Support network cloud service, support mobile remote view

10

FAQ

Q: When adding device by LAN or serial number, it warns " device is not online" or "device is not registered"

A: 1. Please make sure the internet which the device in could be access to internet normally, what's more, the router has opened the DHCP function.
2. If you have changed the device's parameters, please click RESET button 10 seconds to restore its default parameters.

Q: The device is online, and also there is motion happening in surveillance area , but why no reveiving alarm information on mobile phone?

A: 1. Please make sure that the device IP fro APP is running on the mobile, and motion detection function has been open.
2. If you use Apple mobile, please open the " message notification" function during the IOS operation system " setting up----notice"

11

Q: Does the device support USB and charger for power supply?

A: Not available. Please use the power supply to offer the stable power.

Q: Why it reports " memory card fault" when insert the SD card?

A: 1. The device only supports the FAT32 file system, and storage couldn't be above 32GB.Please confirm the file system type and whether the SD card capacity is beyond the normal use scope.
2. The SD card appears some damage, the device couldn't read and write as usual, which needs to reformat by computer before using.

Q: Why the playback is intermittent?

A: Due to the limited use life of the SD cards, the continuous video will largely reduce the SD card life, when the device detects the moving images, the intermittent condition could save storage space and prolong the SD card life.

12

Specification

Spec	1MP	1.3MP	2MP	3MP	5MP
Resolution	1280×720	1280×960	1920×1080	2048×1536	2592×1944
Lens	Fisheye lens				
PTZ	Horizontal : 0°~360° , Perpendicular : -90° ~90				
Video compression	H.264				H.264/H.265
Network Interface	RJ 45 (10M/100MAdaptive Ethernet Port)/wifi 802.11b/g/n				
Storage	Support Micro SD card				
Day & Night	Auto				
IR distance	5-10M (Different according to the environment)				
Minimal Illumination	0.1 Lux @(F2.0,AGC ON), 0 Lux with IR				
Power consumption	3W (MAX)				
Power supply	DC 12V 1A				
Work temperature	-10°C-50°C ≤95% with out condensation				

APP download

The product is belong to network device, upgrade the latest official software, you could get a better experience. Please use your mobile to scan the QR to download and install.



13